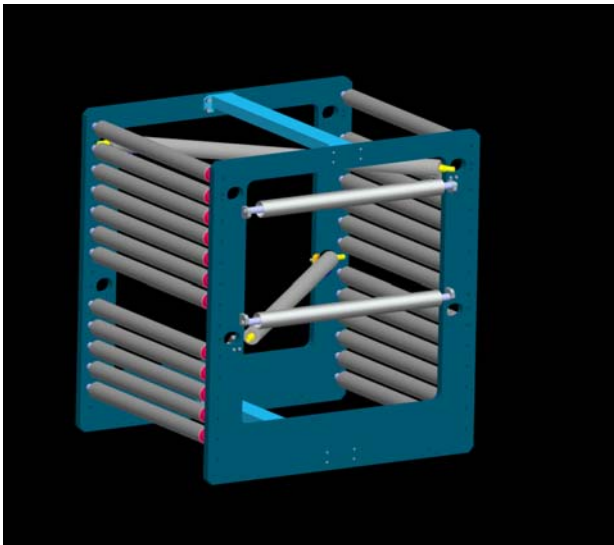
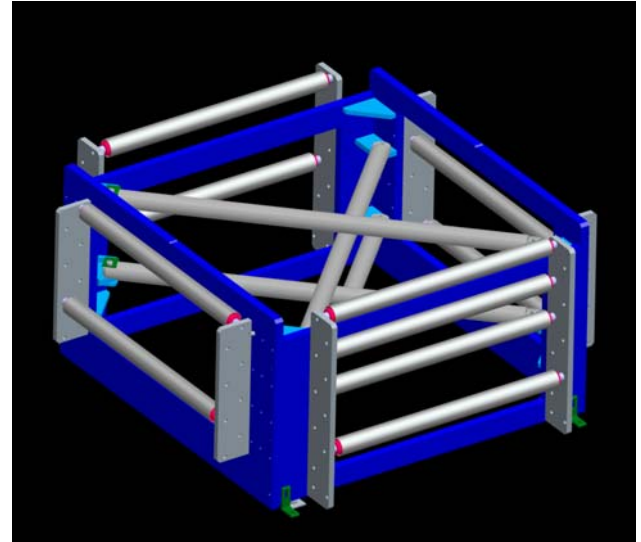


TENSOR GROUP AUXILIARY PRESS EQUIPMENT



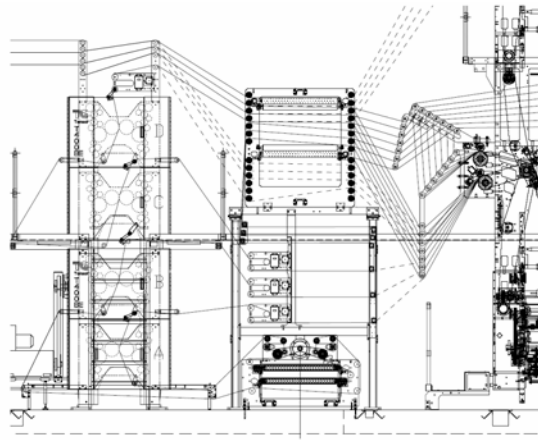
Tensor Angle Bars

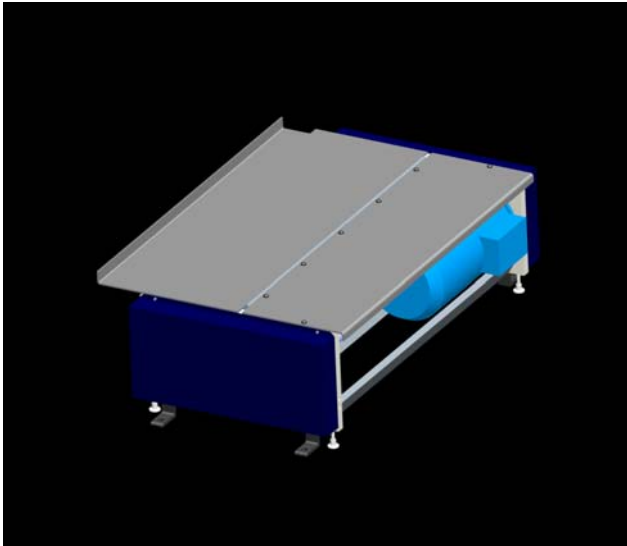
- Durable, high stability construction
- Heavy duty air turn bars with blower
- Applications up to 40" (1016mm) web
- Low profile compact design
- Numerous configuration options available, including in-line and under printing units



Tensor Bay Window

- Rugged, high stability construction
- Customized web path configurations
- Applications up to 40" (1016mm) web width
- Large diameter web lead rollers
- Heavy duty air turn bars with blower
- Several support mounting and support configurations available



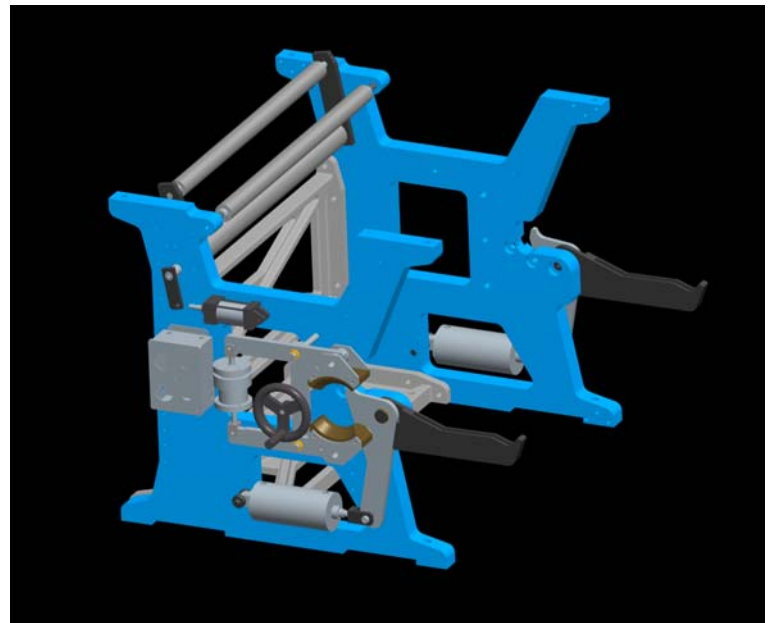


Tensor Infeed

- Shaftless drive, 5.3 HP (4 Kw) AC Vector motor
- Heavy duty, compact, low profile design
- Closed loop control
- Basic interface with LED display or touch screen control with tension feedback display
- Independent pedestal console or drive control integration
- Up to 40" web (1016mm), 1500 fpm web speed
- Up to 115 lb (511 N) tension load

Tensor Roll Stand

- High strength, durable construction
- Available in 42" or 50" diameter roll capacity
- Up to 40" (1016mm) web width
- Manual sidelay positioning
- Pneumatic roll loading arm with optional hoist rails
- Pneumatically controlled brake and tension control with electric brake option
- Air shafts
- Various configuration and arrangement options



All Tensor Press Equipment Designed
and Manufactured in the USA



Tensor Group, Inc

THE SOURCE FOR SINGLE-WIDTH

10351 Rising Court • Woodridge, IL USA 60517 • p. 630-739-9600
800-471-2800 (USA only) • f. 630-739-9339 • www.tensorgroup.com

Information contained in this literature was accurate at the time of publication. Product changes may have been made after the copyright date that are not reflected herein. ©2009 Tensor Group, Inc. Aux Rev. A 10/09